



**Rigid Plastic Container Recycling Rate
2006**

**Recycling Rate for Compliance Purposes
2008**

Oregon Department of Environmental Quality



Rigid Plastic Containers

- Specially regulated under Oregon Law
- Rigid (maintains its shape)
- Container – a package that protects, stores, contains, transports, displays, or sells products
- 8 oz. to 5 gallon capacity
- Includes items like bottles, tubs, pails, cookie trays, plastic flower pots, clamshells, but not most lids
- If recycling rate is above 25%, then everyone is in compliance with the law.



Two time frames for recycling rates:

- Calendar Year Recycling Rate
 - Based on recycling survey data and waste composition studies
 - Determined approximately 1 year after the end of the year
- Recycling Rate for Compliance Purposes
 - Determined for coming year using past trends and other information.
 - Manufacturers use this rate to determine compliance



Recent Trends in Recovery Rates:

- Rates falling slowly from 1996 through 2004
- 2005 rate right on the 25% cusp
- Originally thought rate would fall below 25%, but reversed determination when 2006 recycling numbers showed large increase in recycling.



Changes in Recycling 2005 to 2006 (clean, dry tons)

	2005 Tons	2006 Tons	Change
Curbside/Hauler	8,422	9,717	1,294
Bottle Bill	4,448	3,958	- 490
Specialty Recyclers	1,714	4,000	2,286
Total	14,584	17,675	3,091

Oregon Rigid Plastic Containers

Projected Increased Recycling - Changed Collection Programs Pound per person per year Adjusted for contamination, loss at MRFs

Program Change	added pounds per person per year
Weekly bins to biweekly roll-carts - no tubs	1.3
Weekly bins to biweekly roll-carts - with tubs	1.8
Weekly bins to biweekly roll-carts - add tubs	2.2
Weekly bins to weekly roll-carts - no tubs	3.1
Weekly bins to weekly roll-carts - add tubs	3.6
Add tubs to existing program	0.5

Oregon Rigid Plastic Containers

Projected Increased Recycling - Changed Collection Programs Tons added

Area	Pop. 06	date	Change	Factor lbs/per	Adds (tons)
Sandy	7,070	May 05	Bins to weekly roll-carts - no tubs	3.1	11.0
Lake Oswego & Rivergrove	36,700	June 05	Bins to weekly roll-carts - no tubs	3.1	56.9
Turner	1,645	2005	To roll-carts - drop to biweekly - tubs	1.8	1.5
8 Yamhill County cities	47,600	Oct. 05	To roll-carts - drop to biweekly - no tubs	1.3	30.9
Dundee	3,010	Nov. 05	To roll-carts - drop to biweekly - no tubs	1.3	2.0
Sherwood & Tigard	62,415	Jan. 06	Bins to roll-carts - no tubs	3.1	96.7
Mt. Angel	3,665	Jan. 06	To roll-carts - drop to biweekly - tubs	1.8	3.3
Beaverton	84,270	Mar. 06	Bins to roll carts plus add tubs	3.6	151.7
Mill City	1,585	2006	To roll-carts - drop to biweekly - tubs	1.8	1.4
Damascus & Happy Valley	18,880	Oct. 06	Bins to roll-carts - no tubs	3.1	29.3
Almost all Clackamas County	364,460	Jan. 07	Add tubs to almost all existing programs	0.5	91.1
Wood Village	2,965	Jan. 07	Bins to weekly roll-carts - no tubs	3.1	4.6
Forest Grove	20,380	Feb. 07	Bins to weekly roll-carts - no tubs	3.1	31.6
Molalla	6,830	Apr. 07	Bins to weekly roll-carts - no tubs	3.1	10.6
Stayton	7,700	2007	To roll-carts - drop to biweekly - tubs	1.8	6.9
Woodburn	22,615	Feb. 07	To roll-carts - drop to biweekly - tubs	1.8	20.4
Hillsboro	84,445	Aug. 07	To roll-carts - drop to biweekly - add tubs?	2.2	92.9
Bend	75,290	Sept 07	To roll-carts - drop to biweekly - add tubs	2.2	82.8
Gresham	97,745	Sept 07	Bins to weekly roll-carts - add tubs	3.6	175.9

Oregon Rigid Plastic Containers

Projected Increased Recycling - Changed Collection Programs Tons per year statewide

	2005	2006	2007
Amount added by new programs (cumulative)	42.3	322.8	655.1
Increase from previous year		280.6	332.3

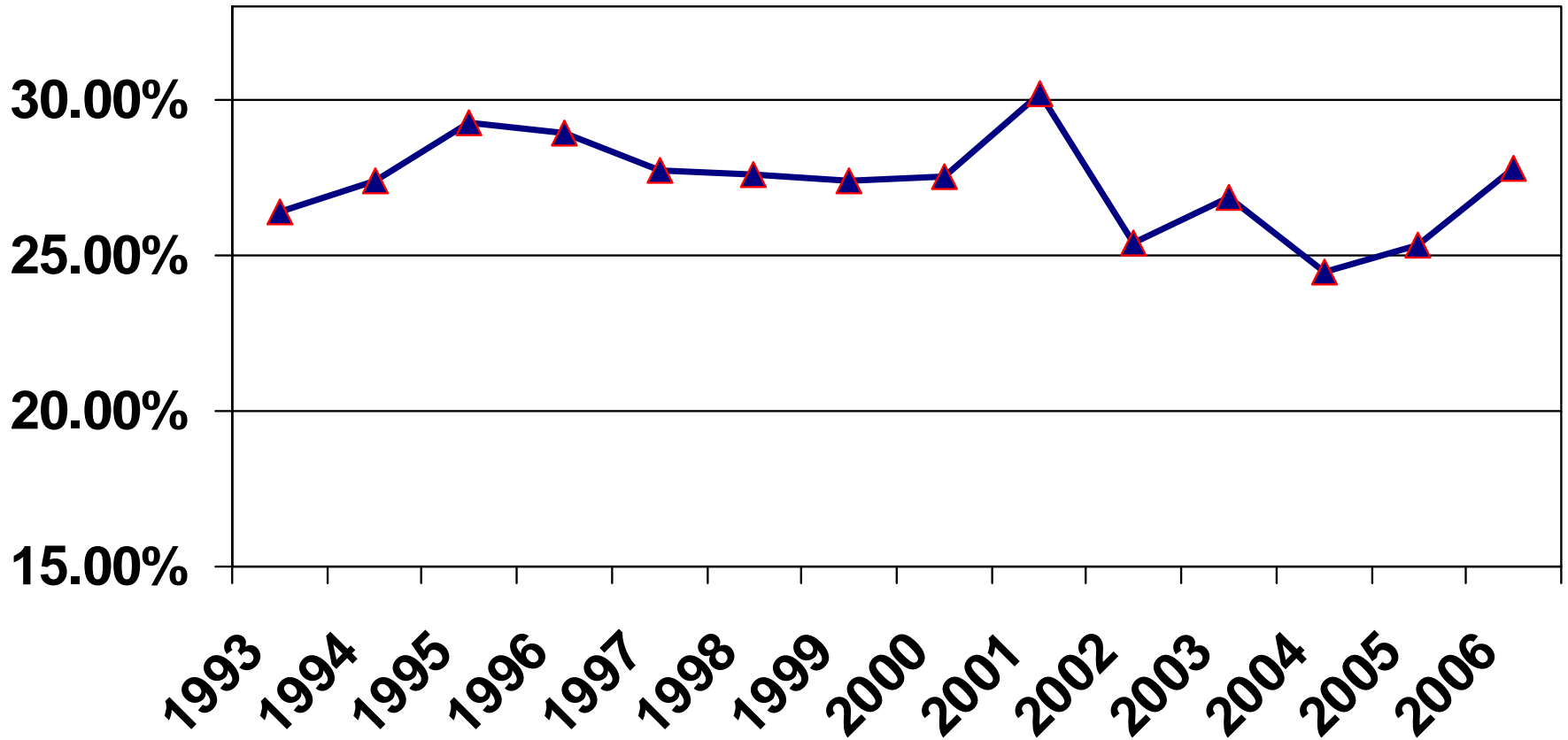
Oregon Rigid Plastic Containers

Oregon Rigid Plastic Container Recycling Rate to 2006

Year	Tons disposed	Tons recycled	Tons generated	Recycling rate
1993	22,635	8,107	30,742	26.4%
1994	23,825	9,007	32,832	27.4%
1995	23,684	9,813	33,497	29.3%
1996	25,793	10,494	36,287	28.9%
1997	27,584	10,546	38,180	27.8%
1998	29,058	11,076	40,134	27.6%
1999	31,400	11,843	43,243	27.4%
2000	33,879	12,873	46,752	27.5%
2001	34,395	14,897	49,292	30.2%
2002	35,808	12,192	48,000	25.4%
2003	37,698	13,840	51,538	26.9%
2004	40,425	13,106	53,531	24.5%
2005	43,035	14,584	57,619	25.3%
2006	45,905	17,675	63,580	27.8%

Oregon Rigid Plastic Containers

Oregon Rigid Plastic Container Recycling Rate to 2006





Disposal by Plastic Container Type

(2005 estimates) Sept. 30, 2007

	Tons	Percent
Deposit bottles	1,837	4.3%
No-deposit beverage bottles	10,130	23.5%
Non-beverage bottles	9,786	22.7%
#2,#5 tubs, pails, pots	9,210	21.4%
Other rigid plastic containers	12,072	28.1%
Total	43,035	100%



Disposal by Plastic Beverage Container (2005 estimates) Sept. 30, 2007

	Tons	Percent Beverage	Percent RPCs
Deposit Bottles	1,837	15.4%	4.3%
Water Bottles	2,769	23.1%	6.4%
Juice/Tea/Sports Drinks	4,172	34.9%	9.7%
Milk Jugs/Bottles	2,663	22.3%	6.2%
Liquor Bottles	303	2.5%	0.7%
Other Beverages	223	1.9%	0.5%
Total	11,967	100.0%	27.8%



Possible Future RPC increases 2008 and beyond based on 2005 generation

	Tons
Portland Curbside to Weekly Roll-carts w/ tubs	1,013
Gresham, other 2007 additions full year	246
Bottle Bill water addition 2009 (new recycling only)	1,209
Bottle Bill juice & teas (not in current law) (new recycling only)	1,847
Improve MRF sorting by 50%	900
Minus reduced soft drink sales	???



Possible Declines?

- Specialty recycling is volatile – could decrease if plastic prices drop.
- Pyrolysis/gasification could take plastics from recycling.
- Continued drop in soft drink plastic bottles.
- Generation projections uncertain – new waste composition study to be done in 2009.
- In spite of these, DEQ thinks its projected recycling increases are conservative, and rate will stay well above 25%.